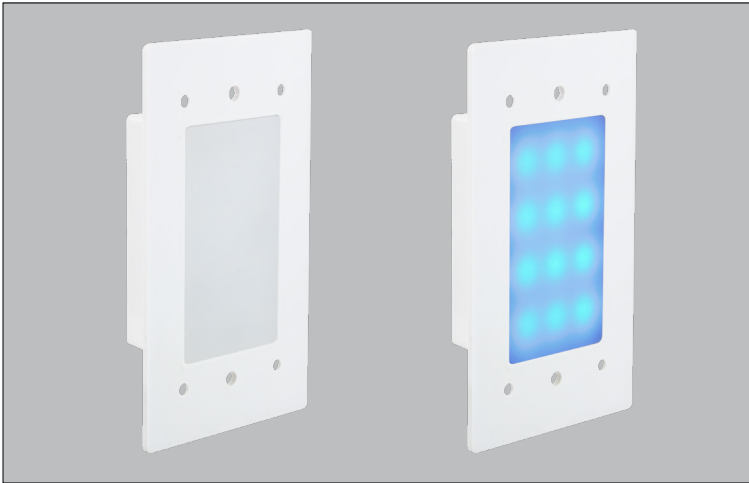


PROJECT:  TYPE:

LOCATION:  CAT:



DARK BRONZE - STAINLESS STEEL - WHITE

**Description**

Easy to install indoor/outdoor LED Step Lights install into most standard depth, single gang junction boxes.

**Features**

- LED light engine in 3200K Warm White or Blue light
- Multiple faceplate styles in three finishes (sold separately)
- Heavy duty plastic light module with white acrylic lens
- Durable cast zinc-magnesium faceplate with powder coated painted finish for White and Dark Bronze finishes, plated for Brushed Steel
- Sealed light engine is rated for wet locations (IP65)
- 7" 18AWG lead wires
- Connect sets of SGL step lights to a branch circuit and use a wall switch for On/Off control

**Mounting**

Install into most standard depth, single gang junction boxes (includes watertight gasket)

**Applications**

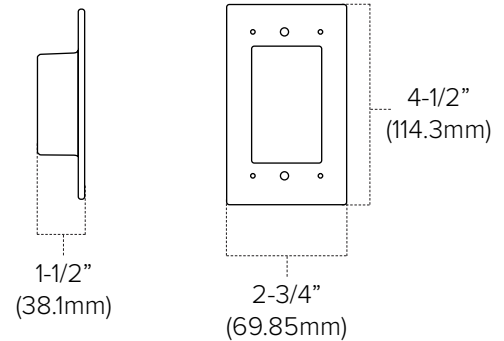
Architectural lighting, stairs, gardens, sidewalk paths



## Technical Information

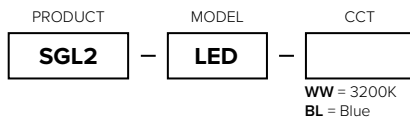
Voltage	120-277V AC, 60Hz	
CCT	3200K	468nm Blue
Wattage	1.5W	
Lumens	6-29Lm (varies by faceplate used)	N/A
CRI/nm	80+ CRI	N/A
Dimming	N/A	
Rating	cULus, Indoor/Outdoor, Wet locations	
Rated Life	50,000 Hours	

Dimensions (LED Light engine only)



## Ordering Information

**SGL2 Step Light  
120-277V,  
60Hz AC**



**SGL2 Indoor/Outdoor Step Lights Include:**

- (1) SGL2 LED Light Engine
- (1) Watertight gasket for single gang junction box

Requires SGL Step Light faceplate (sold separately; see accessories on next page)

Example Part # **SGL2-LED-WW**



## Accessories

Image	Part Number	Description
	SGL-SM-DB	Smooth Lens Faceplate in Dark Bronze finish for SGL Step Light; 2-15/16"W x 4-3/4"H x 3/8"D
	SGL-SM-SS	Smooth Lens Faceplate in Stainless Steel finish for SGL Step Light; 2-15/16"W x 4-3/4"H x 3/8"D
	SGL-SM-WH	Smooth Lens Faceplate in White finish for SGL Step Light; 2-15/16"W x 4-3/4"H x 3/8"D
	SGL-VS-SS	Vertical Scoop Faceplate in Stainless Steel finish for SGL Step Light; 2-15/16"W x 4-3/4"H x 1-1/16"D
	SGL-HW-DB	Horizontal Wave Faceplate in Dark Bronze finish for SGL Step Light; 4-3/4"W x 2-15/16"H x 3/8"D
	SGL-HW-SS	Horizontal Wave Faceplate in Stainless Steel finish for SGL Step Light; 4-3/4"W x 2-15/16"H x 3/8"D
	SGL-HW-WH	Horizontal Wave Faceplate in White finish for SGL Step Light; 4-3/4"W x 2-15/16"H x 3/8"D
	SGL-HL-DB	Horizontal Louver Faceplate in Dark Bronze finish for SGL Step Light; 4-3/4"W x 2-15/16"H x 3/8"D
	SGL-HL-SS	Horizontal Louver Faceplate in Stainless Steel finish for SGL Step Light; 4-3/4"W x 2-15/16"H x 3/8"D
	SGL-HL-WH	Horizontal Louver Faceplate in White finish for SGL Step Light; 4-3/4"W x 2-15/16"H x 3/8"D

## Additional Information

Model	Mounting	Location
SGL2-LED	Direct mount to standard depth single gang junction box	Indoor/Outdoor; Wet location

## NOTES

---



---



---



---



---