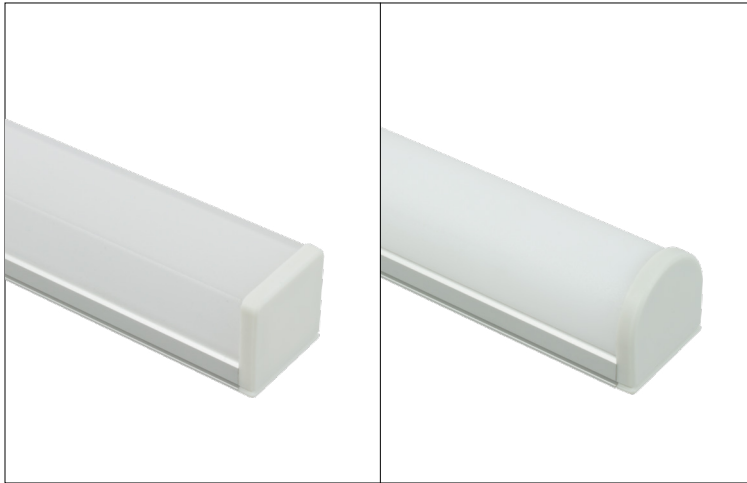


PROJECT: TYPE:

LOCATION: CAT:



With Squared Lens and End Cap

With Rounded Lens and End Cap

Description

The Turbo extrusion resembles a low-profile T5 luminaire when assembled, allowing two side-by-side rows of tape light (15/32" width or smaller) to boost light output and increase coverage.

Features

- Extruded aluminum construction
- 15/16" wide channel allows for two rows of tape light (15/32" width or smaller)
- Use tape light, end caps, and lens to create a complete fixture (tape light and accessories sold separately)

Mounting

Surface mount via construction adhesive or flat-head counter-sunk screws in holes drilled through extrusion; Requires a 1-1/16" width and 1" height clearance

Applications

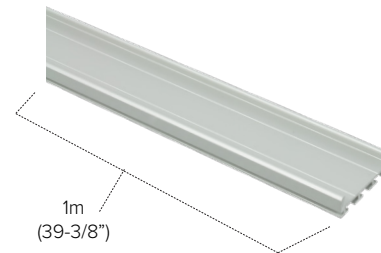
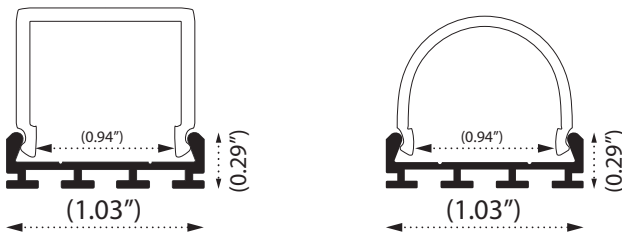
Food prep areas, closets, workshops, and offices

Warranty

3 years

Technical Information

Profile Dimensions



Ordering Information

	MODEL	TYPE	LENGTH
Turbo Extrusion	PE	TURBO	1M

PE-TURBO-1M includes:
(1) 1M Turbo aluminum extrusion

Accessories

Image	Part Number	Description
	PE-RTURBO-1M	1 meter Rounded polycarbonate lens for Turbo extrusion
	PE-RTURBO-END	Polypropylene plastic rounded end cap for Turbo extrusion (when using PE-RTURBO-1M lens)
	PE-QTURBO-1M	1 meter Squared polycarbonate lens for Turbo extrusion
	PE-QTURBO-END	Polypropylene plastic square end cap for Turbo extrusion (when using PE-QTURBO-1M lens)